

# The Old Creamery

Theatre for Young Audiences

2016 SPONSOR **SCHEELS**  
2016 MEDIA SPONSORS

104.5 **KDAT** TODAY'S BEST COUNTRY  
98.1 **KHAK**

**TICKETS: \$10 PER PERSON**  
**ON THE MAIN STAGE**



## THE FROG AND THE PRINCESS

**MARCH 26 – APRIL 9**

Adapted by Brandon Roberts

A handsome prince wants to marry the beautiful princess, but her cruel stepmother casts a spell that turns the prince into a frog—will the princess see past his slimy, green exterior to break the spell and save the kingdom?



## THE EMPEROR'S NEW CLOTHES

**JUNE 18 – JULY 2**

By Jeanine Dwinell Henry and Meg Bryant Davenport

A delightful retelling of Hans Christian Anderson's classic tale of a vain ruler and two mischievous tricksters who promise the king "special" clothes from "special" fabric! Lots of fun and plenty of laughs!



## MISS NELSON HAS A FIELD DAY

**SEPT. 17 – OCT. 1**

Book Music and Lyrics by Joan Cushing, adapted from the book by Harry Allard

The Smedly Tornadoes have not only never won a football game, they have never scored a single point! Coach Armstrong goes bonkers and Miss Nelson decides to help out. She enlists Coach Viola Swamp to whip the team into shape and save the day!



## THE ELVES AND THE SHOEMAKER

**NOV. 26 – DEC. 17**

By Gene Mackey

Come celebrate the holiday season as a classic tale gets a comic spin. When the kindly old shoemaker can't pay his rent, it's elves to the rescue!

**TICKETS: ADULT: \$30, STUDENT: \$18.50**

### Reservations

All ticket orders must be paid in full at the time the seats are held. All phone and online orders must be charged to a credit card before tickets will be mailed or held for pick up.

### Refunds & Exchanges

There are no refunds on ticket purchases. If a performance is cancelled, arrangements will be made to reschedule or refund ticket holders. Tickets may be exchanged from one performance to another of the same event if the exchange takes place at least 24 hours before the original performance. Exchanges are based on seating availability. Tickets may not be exchanged between two different events. *Titles and schedules are subject to change.*

### Children

Out of courtesy for our patrons and performers, we ask that children under the age of 5 do not attend. However, children of all ages are invited to attend any of our Theatre for Young Audiences performances.



The Cast of *The Reluctant Dragon*  
Photo by Lily Allen-Duenas



### ENGAGE WITH THE OLD CREAMERY THEATRE

**Facebook**/OldCreameryTheatre

**Twitter**/@TheOldCreamery1

**Pinterest**/TheOldCreamery

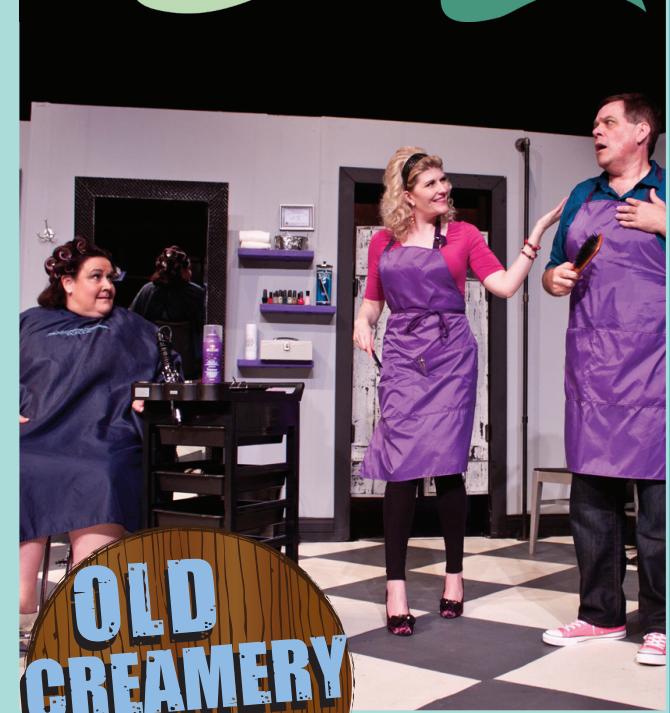
**LinkedIn**/The Old Creamery Theatre Company

**YouTube**/OldCreameryTheatre

Cover photo: Marquetta Senters, Jackie McCall, and Sean McCall in *Shear Madness*, 2015. Photo by Lily Allen-Duenas

Our Box Office is open 7 days a week. Specific hours are seasonal and do vary. We are always open 2 hours before performances. Schedule is subject to change. Please call or visit our website.

**OLD CREAMERY 2016 SEASON**



**39 38TH AVE.**  
**AMANA, IA**  
**52203**

## SHOW TIMES

**Main Stage:** Wednesday, Thursday & Sunday at 2 p.m.; Friday & Saturday at 7:30 p.m.

**Studio Stage:** Thursday & Sunday at 2 p.m.; Friday & Saturday at 7:30 p.m.

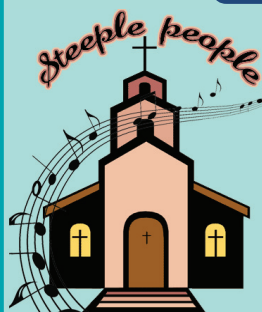
**Theatre for Young Audiences** shows are on Saturdays and select weekday matinees. Call or visit our website for information.

*See a show worth talking about!*

**319-622-6262**  
**OLDCREAMERY.COM**

# THE OLD CREAMERY THEATRE 2016 SEASON!

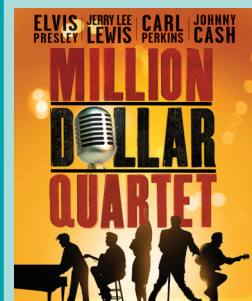
## MAIN STAGE



### STEEPLE PEOPLE

April 21 - May 22

Book by Benjamin L. Jackson; Original music, lyrics, and arrangements by Travis Smith. A brand new Southern Gospel Comedy. Great gospel tunes are performed by the "Steeple People" men's quartet of Stinking Creek, Tennessee as they sponsor a benefit concert and clothing drive. Tight harmonies, terrific music, and lots of laughs! Rated G. Sponsored by: Keystone Place at Forevergreen. Media Sponsor: Mature Focus.



### MILLION DOLLAR QUARTET

June 2 - 26

By Floyd Mutrux and Colin Escott. The hit rock n' roll musical inspired by the electrifying true story of an actual Sun Records recording session with stars Elvis Presley, Johnny Cash, Carl Perkins and Jerry Lee Lewis. This musical includes hits of the era: "Blue Suede Shoes," "I Walk the Line," "Long Tall Sally," and "Great Balls of Fire!" Rated PG. Sponsored by: John & Peg Slusher.



### SHEAR MADNESS

August 4 - August 28

Written by Paul Portner. Adapted by Marilyn Abrams and Bruce Jordan. **Back by popular demand!** This unique comic-whodunit takes place today in the "Shear Madness" hairstyling salon. During the course of the action, a murder is committed and the audience gets to spot the clues, question the suspects, and solve the funniest mystery seen on stage. It's never the same show twice, which is why many audience members return again and again to the scene of the mayhem. Voted "Best Comedy of the Year" seven times by the Boston Globe. Rated PG. Sponsored by: Capper Auto Group. Media Sponsors: Little Village Magazine and IPR.

**TICKETS: ADULT: \$30; STUDENT: \$18.50**

## MAIN STAGE



### GREASE

September 8 - October 2

Book, Music, and Lyrics by Jim Jacobs and Warren Casey. The Broadway smash that inspired one of the most popular movie musicals of all time! Danny is torn between his feelings for good-girl Sandy and his image with the T-Birds and the Pink Ladies. *Grease* is brimming with unforgettable songs: "Summer Nights," "Greased Lightnin'," and "We Go Together!" Rated PG. Sponsored by: Rockwell Collins. Media Sponsors: City Revealed & ICAN.



### NANA'S NAUGHTY KNICKERS

October 13 - Nov. 6

By Katherine DiSavino. A young law student moves in with her sweet and innocent grandmother only to learn that Granny is running a lingerie business for sexy seniors out of her New York apartment. It's two hours of non-stop laughs as granny and her pals try to sidestep the law, a greedy landlord, and a shipment of merchandise gone awry! Rated PG.



### WINTER WONDERETTES

Nov 17 - Dec. 18

By Roger Bean. This seasonal celebration finds the "Wonderettes," a 1960's girl group, entertaining at the annual Harper's Hardware Holiday Party in 1968. When Santa goes missing, the girls use their talent and creative ingenuity to save the holiday party! This show features groovy four-part harmony 60's versions of holiday classics such as "Santa Claus Is Comin' to Town" and "Jingle Bell Rock." This energetic and glittering holiday show is guaranteed to delight audiences of all ages. Rated G.

## STUDIO STAGE



### COMPLETELY HOLLYWOOD ABRIDGED

March 31 - April 17

By Reed Martin and Austin Tichenor; Additional Material by Dominic Conti. Get your clapper boards ready as we rummage through the reels and flick through the films in this riotous carnival of the classics. Giving Hollywood more than just a nip and a tuck, we'll cut through the celluloid to condense 186 of the greatest films in Hollywood's history into a complete compilation of classic cinema! Rated PG-13



### I'LL EAT YOU LAST: A CHAT WITH SUE MENGERS

June 30 - July 17

By John Logan

Hollywood's first female power agent, Sue Mengers, had a star studded list of clients and threw legendary dinner parties. Entertaining, charming, witty — this play invites the audience into Menger's Beverly Hills home for gossip, laughs, and insider secrets. Starring Marquette Senters. Rated R

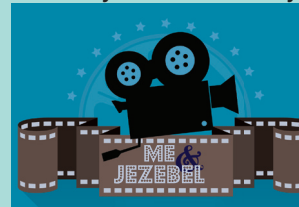


### BUYER AND CELLAR

July 21 - 31

By Jonathan Tolins

The story of an out of work Los Angeles actor who gets hired to serve as the sole attendant of Barbara Streisand's shopping mall—built in her basement! An outrageously hilarious comedy about one very bizarre job! Rated PG-13



### ME AND JEZEBEL

Oct. 6-9 & Nov. 10-13

By Elizabeth L. Fuller

A New York hotel strike in 1985 forces Bette Davis to take residence in a star-struck fan's home for a "day or two," which extends to a whole month. A comical, side-splitting account of what happened when the Queen of Hollywood got stuck in suburbia! Rated R